

**S100A10/P11 Antibody**  
**Purified Mouse Monoclonal Antibody**  
**Catalog # AO1094a****Specification**

---

**S100A10/P11 Antibody - Product Information**

Application	WB, IHC, ICC, E
Primary Accession	<a href="#">P60903</a>
Reactivity	Human
Host	Mouse
Clonality	Monoclonal
Isotype	IgG1
Calculated MW	11kDa KDa

**Description**

S100 calcium binding protein A10 (S100A10/P11), it is a member of the S100 family of proteins containing 2 EF-hand calcium-binding motifs. S100 proteins are localized in the cytoplasm and/or nucleus of a wide range of cells, and involved in the regulation of a number of cellular processes such as cell cycle progression and differentiation. S100 genes include at least 13 members which are located as a cluster on chromosome 1q21. This protein may function in exocytosis and endocytosis.

**Immunogen**

Purified recombinant fragment of human P11 expressed in E. Coli.

**Formulation**

Ascitic fluid containing 0.03% sodium azide.

**S100A10/P11 Antibody - Additional Information**

**Gene ID** 6281

**Other Names**

Protein S100-A10, Calpactin I light chain, Calpactin-1 light chain, Cellular ligand of annexin II, S100 calcium-binding protein A10, p10 protein, p11, S100A10, ANX2LG, CAL1L, CLP11

**Dilution**

WB~~1/500 - 1/2000

IHC~~1/200 - 1/1000

ICC~~N/A

E~~N/A

**Storage**

Maintain refrigerated at 2-8°C for up to 6 months. For long term storage store at -20°C in small aliquots to prevent freeze-thaw cycles.

**Precautions**

S100A10/P11 Antibody is for research use only and not for use in diagnostic or therapeutic procedures.

## S100A10/P11 Antibody - Protein Information

**Name** S100A10

**Synonyms** ANX2LG, CAL1L, CLP11

### Function

Because S100A10 induces the dimerization of ANXA2/p36, it may function as a regulator of protein phosphorylation in that the ANXA2 monomer is the preferred target (in vitro) of tyrosine-specific kinase.

## S100A10/P11 Antibody - Protocols

Provided below are standard protocols that you may find useful for product applications.

- [Western Blot](#)
- [Blocking Peptides](#)
- [Dot Blot](#)
- [Immunohistochemistry](#)
- [Immunofluorescence](#)
- [Immunoprecipitation](#)
- [Flow Cytometry](#)
- [Cell Culture](#)

## S100A10/P11 Antibody - Images

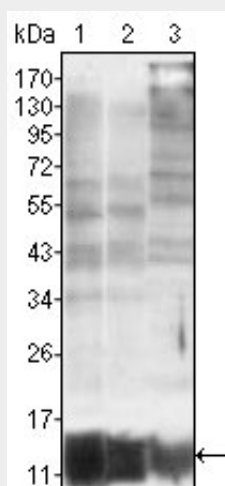


Figure 1: Western blot analysis using S100A10/P11 mouse mAb against MCF-7 (1), HepG2 (2) and Hela (3).

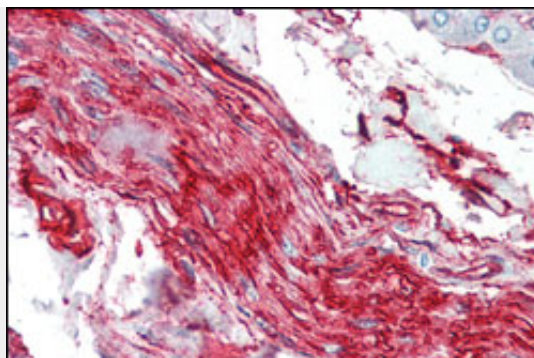


Figure 2: Immunohistochemical analysis of paraffin-embedded human nerve and ganglion cells using S100A10/P11 mouse mAb.

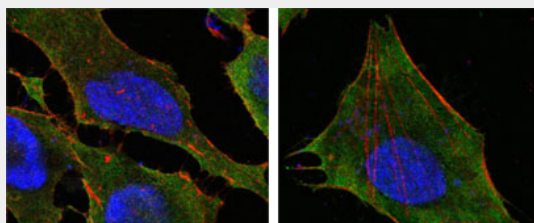


Figure 3: Confocal immunofluorescence analysis of Hela (left) and L-02 (right) cells using S100A10/P11 mouse mAb (green). Red: Actin filaments have been labeled with DY-554 phalloidin. Blue: DRAQ5 fluorescent DNA dye.

#### **S100A10/P11 Antibody - References**

1. Svenningsson P, Greengard P. Curr Opin Pharmacol. 2007;7(1):27-32. 2. Santamaria-Kisiel L, Rintala-Dempsey AC, Shaw GS. Biochem J. 2006;396(2):201-14. 3. Rust R, VL, van dj, Harms G, et al. Br J Haematol. 2005;131(5):596-608.